



**European Cooperation
in the field of Scientific
and Technical Research
- COST -**

Secretariat

Brussels, 2 July 2008

COST 239/08

MEMORANDUM OF UNDERSTANDING

Subject : Memorandum of Understanding for the implementation of a European Concerted Research Action designated as COST Action IS0803: Remaking eastern borders in Europe: a network exploring social, moral and material relocations of Europe's eastern peripheries

Delegations will find attached the Memorandum of Understanding for COST Action IS0803 as approved by the COST Committee of Senior Officials (CSO) at its 171st meeting on 18-19 June 2008.

MEMORANDUM OF UNDERSTANDING

For the implementation of a European Concerted Research Action designated as

COST Action IS0803

REMAKING EASTERN BORDERS IN EUROPE: A NETWORK EXPLORING SOCIAL, MORAL AND MATERIAL RELOCATIONS OF EUROPE'S EASTERN PERIPHERIES

The Parties to this Memorandum of Understanding, declaring their common intention to participate in the concerted Action referred to above and described in the technical Annex to the Memorandum, have reached the following understanding:

1. The Action will be carried out in accordance with the provisions of document COST 270/07 “Rules and Procedures for Implementing COST Actions”, or in any new document amending or replacing it, the contents of which the Parties are fully aware of.
2. The main objective of the Action is to develop a new multi-disciplinary approach to study the process of remaking borders in the eastern periphery of Europe, combining research on everyday social, moral and material aspects of this, and bringing together expertise in both empirical and conceptual research from across the whole region.
3. The economic dimension of the activities carried out under the Action has been estimated, on the basis of information available during the planning of the Action, at EUR 5 million in 2007 prices.
4. The Memorandum of Understanding will take effect on being accepted by at least five Parties.
5. The Memorandum of Understanding will remain in force for a period of 4 years, calculated from the date of the first meeting of the Management Committee, unless the duration of the Action is modified according to the provisions of Chapter V of the document referred to in Point 1 above.

A. ABSTRACT AND KEYWORDS

The significance of the eastern borders of Europe is currently changing. Through a focus on the informal, everyday aspects of this, the Action draws together existing knowledge and develops new understandings of the combined social, moral and material elements of how these borders are experienced and thought about. Its aim is to develop a new approach for studying changes in the Eastern periphery of Europe, through: (a) exploring the process through which borders themselves become visible and meaningful (or disappear), rather than take borders for granted and then study their effects; (b) a simultaneous focus on what borders separate and what they bring together; (c) a focus on ‘remaking borders’, which means studying understandings of possible futures as well as the past; (d) a focus on money, gender and sexuality, which in both empirical and conceptual terms brings together material, political, social and moral aspects of border-making and allows the study of ‘border transgressions.’ Unusually, this Action draws together researchers focusing on the north-east (Baltics and environs) to the south-east (Balkans and environs); and it also combines empirical with conceptual specialists to tackle the complexities of what happens in everyday, informal terms around border regions during periods of transformation.

Keywords: Remaking Borders, North-Eastern Europe, South-Eastern Europe, Gender and Sexuality, Money, Time

B. BACKGROUND**B.1 General background**

(a) The issues to be addressed:

Many recent changes in Europe’s borders have been related to the East: whether the issue is transformations in former socialist states; conflicts in former Yugoslavia; expansion of the European Union; or debates over whether Turkey should join the EU, the East (in spatial, post-socialist and/or Orientalist terms) remains a key element. Those events have generated a widespread sense of transformation, and speculations about their implications for European society. Within this, borders that were once either stable and/or difficult to cross have increasingly appeared to be unstable and/or much easier to cross.

There is a sense that many economic, territorial, legal, social, political, and ideological differences across the region are being brought into more regular, and closer, contact with one another, while also going through a process of change. In short, both the separations of, and relations between, these borders are currently being reconfigured. The question of what constitutes Europe itself and where such a place might be located in social, moral and material terms (which has never been entirely clear), is undergoing renegotiation.

The Action will focus on the informal and everyday aspects of this process, on the way diverse people, places and things, activities, exchanges, talk, relations, histories and imagined futures combine continually to make, unmake or remake borders, so as to explore the current transformations in the eastern periphery of Europe. Doing this requires the collaboration of empirical researchers working across the region (researchers of the Baltics and environs as well as those of the Balkans and environs), who will be brought together with scholars specialising more abstractly on theorising the different elements involved in this process. Their collaborative work on remaking borders will be grounded through a focus on selected substantive themes that allows simultaneous exploration of the interrelation between the material, social and moral aspects of borderlines, as well as the way borders simultaneously involve both exchange and separation.

Using that approach, the Action focuses both on an analysis of border making, unmaking and remaking in itself, and also on four substantive issues selected to draw out those aspects of current border relocations around the Eastern periphery of Europe (see Fig. 1, Section E). The analysis of borders is sub-divided into four elements: (1) borders in themselves (what they are; their material and conceptual qualities); (2) travel, exchanges and translations (border-crossings and relations); (3) differences and inequalities (border separations and distinctions); and (4) documents, techniques and technologies (border controls).

The four substantive issues are: (1) Eastern peripheries; (2) Money (as something that regularly marks differences across borders, and has both material and conceptual qualities, but also provides the means for exchange and conversion across differences); (3) Gender and sexuality (as aspects of social relations and existence that have strong moral implications, and that also simultaneously separate and provide potential for exchange and relations); and (4) Time - pasts and futures (given that both histories and imagined futures are key elements in generating a sense of location, relations and separations).

(b) Wider relevance:

Brought together, these elements will build up a collaborative network of both empirical and conceptual expertise across the eastern periphery of Europe directed towards the development of an innovative approach towards research on how, in informal contexts and everyday life, borders are remade, both in experience and imagination. The results will also provide invaluable online resources and a means to disseminate knowledge about remaking borders beyond the academy (through a visual media exhibition, which will also be available online); it will generate collaborative work between regions, disciplines and, as importantly, conceptual and empirical specialists; the results should prove useful to many other researchers and policy makers, as well as NGOs working on developmental issues and regional actors (e.g. local government).

(c) Why COST?

A key way that this Action will meet its objectives is through building up a network of cross-regional and multi-disciplinary expertise that does not currently exist, as well as the knowledge base essential to develop the new approach and carry out the core groundwork to generate future collaborative research that would be appropriate for programmes such as ESF, ESA, and the EU Framework Programme. The COST programme is ideal for this purpose. COST also accepts new Parties into the Action, useful here, given the Action's broad geographical and disciplinary reach. Finally, COST's commitment to addressing social problems in Europe also makes it ideal.

B.2 Current state of knowledge

The rapid changes in recent years on the eastern periphery of Europe has led to intense levels of research on the socio-economic and political implications and effects of these changes, as well as policy initiatives aimed at trying to manage the situation. The research has generated considerable amounts of data and improved understanding; and the policy-related work has often led to innovative approaches towards overcoming the difficulties and opportunities presented by these shifting borders. Most of this work discusses, often as a starting point before addressing a particular issue, the significance of social, moral and/or material aspects of borders: the way borders (or their crossing) mark differences that make a significant difference in people's lives or their sense of location, belonging or dislocation.

This Action will complement that work through focusing on the relationship between the borders themselves and these social, moral and material aspects, rather than taking borders for granted and then studying their effects. A key aim will be to develop a new approach to understand how borders appear or disappear, become significant, meaningful or meaningless; how they take on, lose or shift senses of moral distinction, social difference, material inequalities, as a continual and complex process.

Some social scientists, particularly anthropologists and human geographers, are already developing elements of this approach towards borders. This Action will draw on that work to build a new approach towards the Eastern peripheries of Europe (including comparative work between the north-eastern and south-eastern regions), focusing on the informal and everyday aspects of border making. The Action's particular innovation will be to combine a focus on Eastern borders in themselves with an approach that keeps the conceptual and empirical elements constantly combined

B.3 Reasons for the Action

(a) Immediate and future benefits and envisaged applications

The most important benefits, other than the final outcome of developing the new approach described above, will be the creation of a network of expertise between regions and specialists who would not normally cross paths, and to work on topics that are normally difficult to collate. The quickest benefit will be a website and Wiki (a set of editable web pages modeled on Wikipedia) that draws together large bodies of information and links to information that is currently dispersed across the eastern peripheries of Europe. In addition, the Action will make important contributions to the study of money, gender and sexuality, and the past and the future in relation to borders. Finally, as part of the process of analysing the visible/invisible aspects of borders, a professional photographer will travel to research sites from the north to the south of the Eastern periphery of Europe. The results will not only provide a visual archive for future researchers; it will also be used as the basis for an exhibition to disseminate the work of the Action to both academic and non-academic audiences. Making the invisible visible can have profound effects in itself; but providing a central point of collation of existing research and knowledge, in addition to the visual exhibition on this issue should prove invaluable for future researchers and others concerned with this eastern European border region in particular, but also border regions that are undergoing change in general.

- (b) Is the project about economic/social needs, or scientific/technological advance, or both?

This is a mostly scientific project focusing on matters of considerable social and political importance; the understanding, network of expertise and knowledge base it will produce will be useful for developing policy in the future.

B.4 Complementarity with other research programmes

Overall, projects recently completed or currently underway on issues related to borders in Europe have focused on the following themes: security; integration and diversity; social change; the economic potential of EU expansion; cross-border crime; human rights; governance; migration; and social exclusion. All these issues are relevant to this Action, though no current projects have the same focus or approach. Their results will form part of the process of researching existing knowledge and empirical material available within this Action, and it is hoped the outcomes of the Action will also contribute in turn to the resources available to these projects. Some examples of the programmes underway include:

A) COST

- Action A24: The Evolving Social Construction of Threats
- Action A28: Human Rights, Peace and Security in EU Foreign Policy
- Action A34: Gender and Well-Being: Interactions between Work, Family and Public Policies
- Action IS0603: Health and Social Care for Migrants and Ethnic Minorities in Europe (HOME)
- (Action 2101)Biometrics for Identity Documents and Smart cards

All these Actions are related to the work of this Action, but none focus on borders in themselves nor eastern borders in particular; none bring together the social, moral and material aspects of borders; and none intend to develop a conceptual approach aimed at understanding the informal aspects of making, unmaking and remaking borders.

B) Other EU Programmes:

- a) EUROMED/Barcelona Process
- b) Based on a declaration made in November 1995 to generate a partnership between the Mediterranean countries in security, trade, and socio-cultural relations, this initiative encourages cross-border integration in the region. This Action will benefit from EUROMED's work, and it will contribute towards a greater understanding of informal processes that lead to acceptance or resistance towards changes in relations in this part of the eastern periphery of Europe. However, EUROMED does not cover the north-eastern periphery, and its work is not primarily science-based.
- c) Border Discourse: Changing Identities, Changing Nations, Changing Stories in European Border Communities. This was a 5th Framework programme project completed in 2003, which generated some interesting results on overlapping issues with this Action. The research focused on 3-generation families and used mostly discourse analysis to approach questions of the border identities of peoples who live near borders. This Action will instead focus upon the borders themselves. People bring many different understandings of themselves to borders; the question we will address is what difference the border makes, if any.
- d) FP framework 6, TP7, Citizens and Governance in a Knowledge-Based Society. This programme has generated a number of projects researching useful topics for the Action. These include: CBCED- Challenges and Prospects of Cross Border Co-operation in the Context of EU Enlargement; DIOSCURI - Eastern Enlargement - Western Enlargement. Cultural Encounters in the European Economy and Society after the Accession; ENEPO - EU Eastern Neighbourhood: Economic Potential and Future Development; EU-CONSENT - Wider Europe, deeper integration? "Constructing Europe" Network; EUDIMENSIONS - Local Dimensions of a Wider European Neighbourhood: Developing Political Community through Practices and Discourses of Cross-Border Co-operation; EUROREG - Changing interests and identities in European border regions: EU policies, ethnic minorities and socio-political transformation in member states and accession countries; Go-EuroMed - The Political Economy of Governance in the Euro-Mediterranean Partnership; MOVE - The Moving Frontier: The Changing Geography of Production in Labour Intensive Industries.

Although all these projects can provide material for the Action, none of them aims to draw together a network of scholars specifically working in the north-eastern and south-eastern peripheries of Europe, and nor are they centrally concerned with the informal aspects of borderlines. EUROREG's work is the most strongly related to the work of this Action, but its focus is on ethnic minorities, and not borders as such.

C) Other FP6 or FP7 projects:

EUREQUAL: this project focuses on social inequality in post-Communist Eastern Europe, and should provide very useful data for the Action. Similarly, the following projects have been identified as having overlapping interests, but again, none of them focus particularly on borders themselves and the explicit bringing together of conceptual and material dimensions. These projects are: IMISCOE - International Migration, Integration and Social Cohesion in Europe; HUMSEC - Human Security in the Western Balkan region: the impact of transnational terrorist and criminal organisations on the peace-building process of the region; INTUNE - Integrated and United? A Quest for Citizenship in an "Ever Closer Europe"; Politis - Building Europe with New Citizens? An Inquiry into the Civic Participation of Naturalised Citizens and Foreign Residents in 25 Countries; RAMSES II - Network of Research Centres in Human Sciences on the Mediterranean Area; WAVE - Welfare and Values in Europe: Transitions related to Religion, Minorities and Gender; GLOMIG- Global Migration From the Eastern Mediterranean and Eurasia: Security and Human Rights Challenges to Europe.

Finally, there is Globalization and the Transformation of Europe's Borders, a seminar series and research network funded by Norface (Globalborders.org.uk) which, of all the projects we have reviewed, comes closest to the type of work of the Action. However, the main focus of this project is globalization, and it does not focus especially on the borders themselves.

C. OBJECTIVES AND BENEFITS

C.1 Main/primary objectives

The main objective of the Action is to develop a new multi-disciplinary approach to study the process of remaking borders in the eastern periphery of Europe, combining research on everyday social, moral and material aspects of this, and bringing together expertise in both empirical and conceptual research from across the whole region.

C.2 Secondary objectives

- (a) To develop a collaborative network of researchers working across the eastern peripheries of Europe, together with specialists on conceptual themes.
- (b) To foster a multidisciplinary dialogue between anthropologists, geographers, historians, sociologists, political theorists and other analysts of borders to advance a multi-disciplinary approach towards theoretical innovation in the developing field of border studies.
- (c) To develop a means to keep the separations, connections and control aspects of borders simultaneously in view while analysing the informal aspects of remaking borders.
- (d) To develop greater understanding of the way money, gender and sexuality, and pasts and futures, are implicated in the remaking of borders, focusing on the combined social, moral and material aspects of these substantive issues.
- (e) To effectively disseminate the knowledge, expertise and outcomes of the Action to scientific and also to some non-scientific audiences.
- (f) To build the capacity for future multi-disciplinary and multi-regional collaborative research on the issues covered by this Action, through links made between departments, institutes and research centres across disciplines and regions.
- (g) To generate an archive of images on formal and informal borders, enclaves and the materiality and morality of border making, crossing and removing.

C.3 How will the objectives be achieved?

The key approach in achieving the objectives is cross-cutting collaboration: given that the Action itself will not carry out research, the new knowledge will be generated from combining people, themes, approaches and regions in ways that are designed to deliver the outcomes outlined above, as follows.

1. The combined focus on scrutinising borders from four different perspectives (borders themselves, as borders; travel, exchanges and translations; differences and inequalities; documents, techniques and technologies); and then cross-cutting these with analysis of four substantive issues (Eastern peripheries; money; gender and sexuality; and time: pasts and futures) will provide the intellectual basis for developing the new analytical approach.
2. Drawing together specialists on the north-eastern peripheries of Europe along with those from the south-eastern peripheries will provide the capacity for the materials from each region to be placed in dialogue.

3. Drawing together regional and empirical research specialists with those working on more abstract and conceptual frameworks will provide the capacity to rigorously analyse the material collated.
4. A simultaneous focus on the social, moral and material aspects of remaking borders will provide the means to keep the interplay between relations, values and practical experiences constantly in view.
5. A professional photographer will visit research sites from across the eastern periphery region during the course of the Action, working closely with the researchers in developing an additional visual understanding of the same issues being analysed differently by other members of the team. The results will be compiled into an exhibition, in both physical and online versions.

C.4 Benefits of the Action

The main benefits, as reflected in Section B.3 are:

1. Improved means to study the current informal and everyday process of relocating borders in Europe's eastern periphery, focusing particularly on its social, moral and material aspects, which could include a better understanding of the relocation of Europe as a whole.
2. An improved understanding of the similarities and differences between the north-eastern and south-eastern European periphery.
3. The development of a new network of experts working across a range of Eastern periphery regions, which will build knowledge and research capacity on this topic in Europe. The network will include a significant number of early career researchers, which is built into the design of the project (see section D). This will both encourage the continuation of the work of the Action into the future, and it will also considerably benefit the current research of the young scientists to be involved.
4. The development of a Wiki that will be regularly updated by members of the Action as the work progresses; each Working Group and Workshop (see Sections D and E) will be responsible for developing and maintaining certain pages relating to their research tasks, but

the entire membership of the Action will be permitted to add to or edit any entries. This will ensure the building up of open, flexible and collaborative work, and will provide means to continue to build the knowledge base, and to constantly draw in new participants and knowledge, after the end of the Action.

5. The development of an Action website containing a description of the Action, the annual and then final reports, a database of members with information on their interests; an archive of publications and useful links; and an online version of the visual exhibition. This will make the work of the Action accessible to a wide audience.
6. The production of two major volumes for publication, containing the major results of the Action for an academic audience.
7. Further understanding of the study of money, gender and sexuality, and the past and the future in relation to borders.
8. The generation of a visual record of this current period of the relocation of the Eastern periphery of Europe, to be used both as an exhibition and as a research archive.
9. The ability of scientists from across the Eastern periphery of Europe, both from countries that are well-resourced and those that are much less well-resourced for scientific endeavour, to participate equally in the work of the Action.

C.5 Target groups/end users

The main end users of the output of this Action will be scientists working on many aspects of the relocation of borders on the Eastern periphery of Europe, most particularly those aspects involving gender and sexuality, social relations and separations, monetary exchanges and other cross-border trade, those concerned with the policing and transgressing of borders, those concerned with migrants and refugees, and those concerned with differences and socio-economic inequalities. In the longer term, the Wiki and visual exhibition (a version of which is to be provided online) in particular should provide an accessible and useful resource for a range of organisations, mostly in public, rather than commercial sectors: NGOs concerned with any of the issues dealt with in the Action; teachers and lecturers running courses on contemporary social, moral and material shifts occurring in Europe; and policy makers concerned over how to intervene in the current changes in a

more effective way, would all benefit from access to detailed information and a list of experts and organisations that specialise particularly in the informal, everyday and more social aspects of what makes borders important (or unimportant).

D. SCIENTIFIC PROGRAMME

D.1 Scientific focus

The overriding focus of this Action is on borders themselves, and the informal and everyday processes involved in remaking them on the eastern periphery of Europe, with a particular substantive focus on the themes of money, gender and sexuality and time (past and future). The research tasks to tackle this are sub-divided into two main tasks, each of which will involve the carrying out of a series of other, cross-cutting tasks aimed at both generating new knowledge and collaboratively combining it with knowledge created by others in the Action. An explanation of the thinking behind this is outlined below.

(a) Most important research tasks

Main tasks:

1. Unraveling borders: To study four key elements of borders themselves in detail, as follows:
 - (i) Borders. The main question for this section is: what are borders? It will focus on the concept of borders and borderlines (that is, what gives a sense of something or somewhere being a border) in the widest sense, and will draw on both empirical and conceptual material to compile a body of information about the current state of the art research in this field, particularly in the social sciences and human geography, but also elsewhere. The focus of this work is to outline what the concept of remaking borders might mean from a wide range of perspectives, and how that might be used to address the more substantive questions of the Action.
 - (ii) Travel, Exchanges, Translations. The main question for this section is: what does the crossing of, and exchanges across, borders involve? People, things, animals, images, rumours, beliefs and information constantly move across borders, in different ways at different times, and often, it is in the crossing (or attempt to cross) borders that borders become evident. This section will focus on how to approach the movements around borders (both legal and illegal), and how

differences between people, places, rules and conventions are somehow dealt with (or not, as the case may be). An important aspect of this will be a focus on the means used to translate or make conversions across perceived or material differences: not only in terms of language and currency, but also in terms of a translation across concepts, beliefs, fears and so on.

- (iii) Differences and Inequalities. The main question for this section is: how are the separations of borders generated and understood? The section looks at the way borders divide and distinguish. Unsurprisingly, this is the most studied aspect of borders, for material, political or conceptual differences are often the stated reason for the existence of borders in the first place: they mark differences that make a difference, to borrow from Bateson (1972). In many cases, differences between one side and the other involve some form of material inequalities, but also a wide range of social and cultural values and morals, as well as histories and imagined futures.
- (iv) Documents, Techniques and Technologies. The main question for this section is: what technical means are used in border regulation, creation and control? This is one of the most distinctive elements of borders, and is usually the most visible, though it is not often the direct object of academic research, with some exceptions. These controls are key: for example, not being able to easily cross borders during the socialist period in Europe, especially for those living in the socialist part, was an iconic characteristic of the difference between west and east. Equally, the loosening of controls across borders within the EU has been regarded as a crucial element of greater European integration. So the paperwork, the barriers, the police, the military, and all related technical and technological aspects of controlling borders will be studied here.

2. Investigating substantive themes

The second main task is to ground the question of remaking borders through an investigation of selected substantive themes in relation to borders in such a way that it will allow simultaneous exploration of the interrelation between the material, social and moral aspects of borderlines, as well as the way borders simultaneously involve both exchange and separation. The four themes are as follows:

- (i) **Eastern Peripheries:** This theme focuses both on the concept of east and eastern as well as on what counts as the eastern periphery of Europe, and how these might be undergoing transformation during the current period. Broadly, the region covers the Baltics and environs in the northeast down to the Balkans and environs in the southeast. However, the concept of east may also include areas that are simply regarded as post-socialist and, on the other hand, that are too far east in orientalist terms: at the moment, that too far east element is centred on the question of the inclusion or exclusion of Turkey in what counts as Europe.

- (ii) **Money:** This theme will focus on the relation between money and remaking borders; it will particularly consider the material and conceptual ways in which money contributes to the generation of a particular sense of borderlines, both in terms of the differences or similarities between one place/people and another, and in terms of the possible exchanges, translations and conversions that can occur. Money has been selected as a substantive theme for three reasons: it strongly marks political, economic and social differences, while at the same time providing a means of exchange and conversion; it has both powerful material and symbolic qualities and the complexities of the introduction of the euro is a testament to that and it is used everywhere in both formal and informal ways in everyday life. Money is always present around borders, multiply connecting and disconnecting peoples and places.

- (iii) **Gender and Sexuality.** This theme will focus on the relation between gender, sexuality and remaking borders. This topic has been the focus of a great deal of research around European borders in recent years, particularly in the fields of the illegal sex trade, but also in terms of a range of other topics, especially in relation to post-socialist transformations. That work will prove useful to this Action, though the focus here is on the combined social, moral, material and conceptual aspects of the relations between gender and sexuality and remaking, or relocating, borders. As is the case with money, gender and sexuality seem to always contribute towards a sense of borderlines, generating both separations and possibilities for exchange. This theme will consider how reputations as well as practices, social relations as well as economic transactions, kinship as well as alienation, bodily experience as well as imaginations, beliefs as well as

regulations, become involved in the complex entanglement between gender, sexuality and borders.

- (iv) Time (past and future). This theme will focus on the way pasts and possible futures become entangled in the remaking of borders. Many studies exist of how political and social use of the past forms a key element of generating both a sense of authenticity and legal substance to borders, as well as how, sometimes, they disappear; analysing that literature will form an important part of the work of this theme. In contrast, studies of concepts of the future in relation to borders are almost non-existent. Mostly, studies of the future focus on the imagination of extraordinary futures millennial visions, utopias and dystopias, etc. Yet it is obvious that ordinary, everyday ideas about what might happen next are also very important in informing how people understand their situation. Such everyday speculations are certainly strongly disrupted by major conflicts, political changes and unresolved disputes involving borders: during such moments it is usually impossible to feel secure about tomorrow. Thus ideas about the future in general is an important aspect of the sense of borderlines, and requires close attention in this Action.

Cross-cutting tasks

Both the main tasks above will involve the following cross-cutting tasks:

1. Focus on social, moral and material aspects. The thinking behind this has emerged in the course of the descriptions of the Action above: the aim is to ensure that both empirical and conceptual elements of remaking borders are focused upon simultaneously. The social focuses attention on all the relational aspects of borderlines. This draws from Stratherns (2006) distinction between the social (which involves relations, both formal and informal, amongst and between people, that also extend beyond peoples own group) and the cultural (which, in recent definitions, has tended to mean generating collective identities through making distinctions between one group and another). In this sense, the social both generates and extends across boundaries continuously, and is thus a crucial concept in this Action. The moral aspect focuses on the values, judgements, and beliefs involved in borderlines. The difference between here and the other place is almost invariably infused with such judgements. And the material aspect here refers to empirical, physical, economic, legal and political conditions that affect people's everyday lives.

2. Focus on the informal and everyday. In sum, this focus is the key means by which the Action will study the remaking of borders as significant or insignificant, beyond or in addition to official, legal and policy-related generation of borders. Many studies of borders have concentrated attention on the moments of sudden change, times when borders become problematic or are legally altered in some way. This Action will instead focus on the multiple practices that occur during ordinary, apparently uneventful moments, and yet are often key to the daily experience of borders. Over time, such informal, everyday activities subtly change the significance of borders.
3. To draw together specialists working in the different regions of the north-eastern and south-eastern peripheries of Europe, as well as conceptual specialists on the themes of the Action, and develop a sustained dialogue between them, which will provide the basis for comparative and collaborative work.
4. To collate together existing knowledge on each element and theme identified in the main tasks, and to provide the results in an accessible form, both to other participants in the Action and subsequently to wider audiences.
5. To identify, as widely as possible, all current research being carried out on the elements identified in the main tasks, and in particular, to focus on research that provides details of informal and everyday elements as well as research that combines an interest in both empirical and conceptual elements.
6. To generate an ongoing cross-over of knowledge and expertise between the two main tasks: i.e., to use the knowledge from the first main task (unraveling borders) to specifically address the themes of the second main task (eastern peripheries, gender & sexuality, money and time), and vice versa.
7. To examine the visibility/invisibility of the eastern peripheries of Europe, from the north-east to the south-east, mostly through using a professional photographer to work with researchers on location in their research sites, and to make the results accessible.
8. To build up scientific capacity to carry out further research on the themes of the area - first through the collaborative work of this Action, and second through the involvement of early career researchers who can go on to develop the results of the Action in the future.

9. From all of the above, to contribute towards generating a new approach towards the study of remaking borders by the end of the Action.
10. To disseminate the results, the information base and the network of expertise that will result from this Action widely, and in an accessible way. This will be mainly achieved through the Action's Wiki and the website (which will be built up and made available from the first year of the Action), the visual exhibition (to be completed by the end of the Action, but initial results will be made available), and through scientific publications.

Human and technical means: There will be four main techniques used to carry out these tasks, and four main kinds of experts who will be needed, as follows:

Techniques

1. Regular and intensive dialogue between different specialists (both cross-disciplinary and cross-regional), particularly those who do not usually come together to have such dialogues, in order to develop collaborative capacity.
2. Structuring into the Action regular exchange of knowledge and personnel between the substantive, regional and conceptual elements, so as to avoid the development of independent sub-groups within the Action.
3. The use of broadly ethnographic techniques to analyse secondary sources. These techniques are particularly suited to focusing on the informal, the messy, the everyday, the officially invisible or semi-visible aspects of social life and relationships. Although it is commonly assumed that ethnography is mostly a fieldwork research method involving participant observation, its principles can also be used to look at a wide range of research materials and for a wide range of research purposes. The close attention that an ethnographic approach pays to the details of everyday life and relations, and to the way these details are informed by a wide range of social, moral and material factors, makes it ideal for this Action.⁴ The use of photographic techniques to address specific questions about the visual aspects of remaking borders along the Eastern periphery of Europe. The diverse material elements of borders will be studied (land, air and water; the architecture of border posts; the policing, etc).
4. The use of photographic techniques will be used to capture this visual complexity, and it will simultaneously provide a visual record of the current peripheries of Eastern Europe, stretching

from the north-east (Baltics and environs) to the south-east (Balkans and environs). It will also involve images of unofficial borders, enclaves, and the wide range of activities that occur around border regions.

Expertise and personnel

1. Academic expertise and past research experience in one or more of the following areas:
 - Borders, frontiers and borderlands, especially but not exclusively in the eastern peripheries of Europe; - Informal and everyday life, especially using an ethnographic approach; - The use, exchange and circulation of money, particularly but not exclusively across borders; - theories of money; - Gender and/or sexuality, both empirical and conceptual expertise;
 - Migrations, undocumented peoples and refugees; - Histories, memories, imagination, hopes and fears, particularly relating to borders and the eastern peripheries of Europe; - Differences and inequalities, particularly relating to those marked or in some other way affected by borders; - Bureaucratic and other techniques of controlling, defining and securing borders.
2. Early career researchers. Their involvement ensures: (a) that those people who are currently most active in primary research and who are most up to date with the newest literature are involved in the Actions work; (b) the future continuity of the new approach towards remaking borders; (c) provision of direct access to more senior specialists in their field. This will have training and network-building implications.
3. The services of a professional photographer to carry out the visual part of the work outlined above.
4. The services of a Wiki and website designer who can assist in setting up and maintaining the online aspects of the project.

D.2 Scientific work plan – methods and means

- (a) Work Groups and Workshops. The key method here is to bring together empirical and conceptual specialists, first to work on borders themselves, and then to work on the substantive topics identified, before moving on to generating the results and disseminating them.

In summary, the work plan is as follows (see also Figure 1 in Section E.1 below):

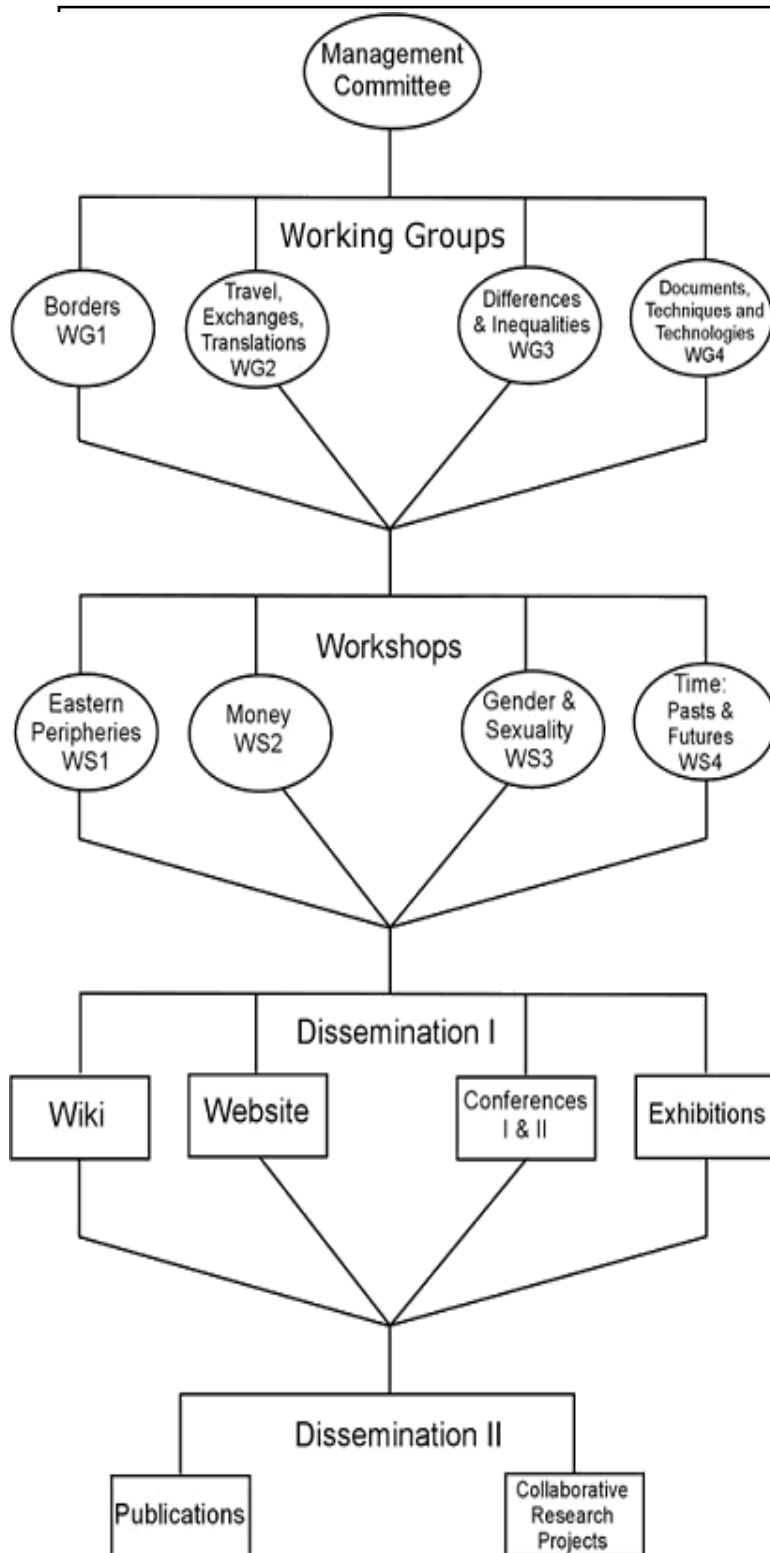
1. The four sections of the Unraveling Borders task described in D.1 (Borders; Travel, Exchange, Tranlations; Differences and Inequalities; Documents, Techniques and Technologies) will be formed into four Working Groups. These groups will be responsible for collating, analysing and disseminating all the material for their section, and for incorporating the cross-over themes and tasks into their material. Each Working Group will contain specialists on both the north-eastern periphery of Europe and the south-eastern periphery, to ensure cross-over information; both empirical and conceptual specialists; and both senior and junior scholars.
 2. The four substantive themes (Eastern Peripheries; Money; Gender and Sexuality; Time: pasts and futures) will be investigated through a series of themed Workshops. There will be four Workshops held for each theme over the course of the Action. Each Working Group will send 2 members to each of the Workshops. Those two members will be responsible for providing their Working Groups material to the Workshops, and for providing material from the Workshops back to their Working Groups. For example: the Borders Working Group will send 2 members to attend the Workshops on Eastern Peripheries, 2 other members to attend the Workshops on Money, and so on. This method ensures that each Workshop has members from every Working Group in it, and that each Working Group has members who are aware of the work of each Workshop.
- (b) Collating knowledge. The material gathered and presented by the Working Groups and Workshops will be entered online, so that it is available to all; this will be used as an ongoing resource for the work of analysis and development of the new approach.
- (c) Photography project. The professional photographer will work with members of the Working Groups to identify 6 appropriate currently active research sites across the north-east and south-east periphery of Europe to carry out the photography project.
- (d) The new theoretical perspective: This will be developed from the above and initially tested by using existing research results and reformulating them in light of the new approach; subsequently, new collaborative research projects will be developed, based on the new approach (separate funding will be sought from other programmes to carry out these projects following the completion of the Action).

E. ORGANISATION

E.1 Coordination and organisation

The key elements of the coordination and organisation of the Action is illustrated and described in Figure 1, which forms part of this section. In summary, the following principles have been used to develop this structure:

1. The Management Committee will follow the rules laid out in COST 270/07, Annex II, or any subsequent revision of that document.
2. Four Working Groups (see Figure 1 and E.2). These will meet in the first six months of each year of the Action (i.e. four times), to carry out the tasks described in section D.
3. Four Workshops (See Figure 1 and E.2). These will meet during the second six months of each year of the Action, allowing time for the Working Groups to prepare their materials for the Workshops. The completion of the work of each Workshop will constitute the annual milestone in the progress of the Action.
4. First phase of dissemination of results: the Actions Wiki, the website, two conferences and the visual material exhibition, described in more detail in Section H.
5. Second phase of dissemination of the results. These will be completed largely after the end of the Action, in the form of publications and the development of future collaborative research projects. See Section H for more details.
6. In addition, the photography project will be carried out throughout the period: 2 field trips per year for 3 years, followed by a year of putting together the exhibition. See Section H for more details.



Management Committee
 Follows COST270/07 Annex II
 Meets 2 times/year over 4 years

Working Groups
 At least 8 member per group + early stage researchers
 Meet 4 times in order to:

1. Collate existing knowledge on the theme of each Group
2. Develop conceptual framework
3. Contribute to cross-over workshops
4. Coordinate dissemination

External evaluator

Crossover Workshops
 Members from each Working Group + early stage researchers
 Each meets 4 times to:

1. Draw together the work of the Working Groups to tackle the topic of each workshop
2. Collate empirical and conceptual material presented at the workshops
3. Contribute to dissemination

External evaluator

Dissemination I
 To occur during Action Working Groups and Workshops to contribute material to the Action’s wiki and website
 Working Groups to coordinate their contributions for the 2 conferences and the visual exhibition
 External evaluator

Dissemination II
 To occur mostly after end of the Action
 Working Groups to provide 2 contributions each to Action monograph 1; Workshops to provide 2 each to monograph 2; collaborative new research projects to be developed
 Evaluation by peer review and funding organisations.

E.2 Working Groups

1. **Working Groups.** Each Working Group will have a similar structure: there will be at least 10-12 members in each, up to 8 of whom will be recognised experts in their field, and up to 4 of whom will be early career scholars. This will make a minimum total of 40-48 participants in Working Groups. These members will be selected by the Management Committee in accordance with COST 270/07 Annex II, as appropriate, relating to the research objectives of the Action, as follows:

First, each Working Group must contain members who are experts in some aspect of the north-eastern periphery of Europe as well as members who are experts in the south-eastern periphery of Europe. This will ensure that the aim of bringing together experts from across the eastern periphery of Europe to carry out comparative work on their research areas is achieved as effectively as possible. For this reason the collaborative tasks in this Action requires the development of good levels of communication, which will be challenging, as members will come from different regions, and will be multi-disciplinary specialists in both empirical and conceptual work.

For each meeting, the members of the Working Group will prepare the collation, analysis and/or writing up of material. Each Working Group will send at least 2 of their members to each Workshop. Those members will jointly prepare material in advance to present to the Workshop, as agreed by the Working Group. They will also jointly prepare reports to present at the next Working Group on the Workshops. Therefore, each Working Group meeting except the first will involve the presentation of at least 4 reports to the Working Group. Each meeting will also organize the next tasks for the Working Group and preparation of material for the Wiki, the website, reports to the MC, conferences and preparation of publications, including 2 articles for a collective volume of the Action (one conceptual and one substantive). The final Working Group meeting will focus on collating final results and presenting them to the final conference, and plans for collaborative work in the future. Working Groups will also liaise with the photographer on the visual project.

2. **Workshops.** Each Workshop will be composed of at least 8 members from the four Working Groups, and up to 4 early career researchers. They will involve presentations from members

of each Working Group, from early career scholars if appropriate, and from occasional presentations from invited external experts in the themes of the Workshops. From this, reports for the Wiki and website, presentations for the conferences, and preparations for publication will be developed.

E.3 Liaison and interaction with other research programmes

Due to constraints of space in this section, a full list of planned links with other Actions, networks and other research programmes cannot be provided. An indicative list is provided in Section B.4 and further in section H.1 below. Currently over 40 potential links are envisaged, both with European and non-European programmes and networks. These will be established through: adding hotlinks to their websites in the Actions website; if those websites contain useful data for the Action, this will be linked into the Actions Wiki as well; and the members and participants of these programmes will be invited to attend the Actions two conferences. In addition, individual members of other programmes will be invited, and can also ask, to become non-active members of the website-based network. This will allow them to participate in online and email discussions, and to access any working papers on the website.

E.4 Gender balance and involvement of early-stage researchers

This COST Action will respect an appropriate gender balance in all its activities and the Management Committee will place this as a standard item on all its MC agendas. The Action will also be committed to considerably involve early-stage researchers. This item will also be placed as a standard item on all MC agendas.

This Action, both in the nature of its work (a strong focus on issues relating to gender and inequality) and in the structure of its organisation (full integration of early career researchers into the Actions working structure), takes these issues exceptionally seriously. This is not simply because of a concern for equity, but because both are seen as essential elements in the successful outcome of this Action, and the usefulness of the results for the future. In terms of gender balance, a high proportion of experts in the disciplinary fields of the Action are women, and the vast majority are aware of gender issues, whether they are men or women. In terms of early career researchers, and in addition to their structured role, they will be offered the opportunity to have named mentors

from the more senior scholars to advise them on their work during the Action and future career development.

F. TIMETABLE

This Action will last for a period of four years, from 2008 to 2011 inclusive, beginning on the date of the first valid meeting of the Management Committee of the Action.

Year 1

MC has first meeting and launches the Action. It sets rest of meetings, for MC as well as for Working Groups, Workshops and Conferences; it organizes appointment of evaluators. Meeting 1 for all Working Groups in first six months

Meeting 1 for all Workshops in second six months

2 Photography projects during year 1, for Working Group 1 and Working Group 2

Launch Wiki and Website; organize maintenance and design issues

Enter initial results of Working Groups and Workshops on password-protected part of website

Enter first year reports on public website

Begin constructing pages and topics for the Wiki, and enter initial findings

Organisation of conference I

MC has second meeting to consider initial results, write annual report and plan Year 2

Year 2

MC meets to finalise plans for conference I, review results of Year 1 and organize and monitor events of Year 2

Meeting 2 for all Working Groups in first six months

Meeting 2 for all Workshops in second six months

Conference I held at end of Year 2

2 photography projects, for Working Group 3 and Working Group 4

Start working on exhibition, using photography project

Further develop Wiki pages and website; add results of year 2 by end of year

Make initial plans for Conference 2, to be held at end of year 4

Enter second year reports on website

MC meets to consider initial year 2 results, write second annual report and plan Year 3

Year 3

MC meets to review results of Year 2 and organize and monitor events of Year 2

Meeting 3 for Working Groups in first six months

Meeting 3 for Workshops in second six months

2 photography projects during year 3, for cross-over themes

Continue working on visual exhibition

Further development of Wiki and websites

Begin publication plans

Enter third year reports on website

Finalise preparations for conference

MC meets to consider initial Year 3 results, write third annual report and plan Year 4

Year 4

MC meets to review results of Year 3 and organize and plan the completion of the Action during Year 4

Work focused on dissemination: conference and exhibition, links with other organisations, collation of final results, planning of publications and future collaborative research projects

Meeting 4 for all Working Groups in first six months. Unusually, the 4 Workshops will be held during the same period, in the first six months, to coordinate the completion of the Action and plans for the exhibition and Conference

Write final report for COST

Conference II held towards end of Year 4

Photographer assists in compiling exhibition

Exhibition completed and tour of results carried out in second six months of the year

Wiki pages completed for each topic and theme

Information databases completed and placed on website

Plans for publication completed

G. ECONOMIC DIMENSION

The following COST countries have actively participated in the preparation of the Action or otherwise indicated their interest: AT, HR, CY, CZ, FI, DE, GR, HU, IL, IT, LV, NL, NO, PL, SI, TR, UK. On the basis of national estimates, the economic dimension of the activities to be carried out under the Action has been estimated at EUR 5 million for the total duration of the Action. This estimate is valid under the assumption that all the countries mentioned above but no other countries will participate in the Action. Any departure from this will change the total cost accordingly.

This estimate has been rounded up to the nearest million Euro, and it includes a current estimate of some 49 person-years of work on the Action plus costs for equipment, instruments, infrastructure and the materials and services of a professional photographer. In summary, these person-years were calculated from estimating the amount of work involved in holding Management Committee meetings, Working Group meetings, Workshops, conferences, field trips for a photographer and the maintenance of electronic resources, as well as catering for monitoring and evaluating the work.

Non-COST countries expressing interest: Canada, Russia and USA.

H. DISSEMINATION PLAN

H.1 Who?

1. Academic and related organisations. The initial main target audiences will be academic and other scientific researchers working on issues relating to this Action, particularly on borders.

In addition to those listed B.4 above, the following organisations have been identified:

- Association for Borderland Studies (USA)
- Association of European Border Regions
- Border Towns Forum
- Centre for Baltic and East European Studies (Baltic Sea Foundation), Södertörn University College, Sweden
- Centre for Cross Border Studies, Armagh, Northern Ireland,
- Centre for International Borders Research (CIBR)
- Centre for Regional and Transboundary Studies (CRTS)
- Centre for Research on Socio-Cultural Change
- Danish Institute of Border Region Studies

- ESRC Centre for the Study of Globalisation and Regionalisation
 - ERCOMER, European Research Centre on Migration and Ethnic Relations
 - European Borders Group
 - Institute for Women's Policy Research (IWPR)
 - International Boundaries Research Unit, Durham University
 - International Center for Research on Women (ICRW)
 - International Gender and Trade Network
 - ISIG: Istituto di Sociologia Internazionale di Gorizia
 - National Council of Women's Organizations
 - Network of East-West Women
 - Nijmegen Centre for Border Research
 - No Border Network
 - Nordic Network on Transnational Migration
 - WIDE, Network Women in Development Europe
2. NGOs, EU and related organisations. There is a wide range of organisations engaged in themes to be covered by this Action, and who could well find the summary results of this Action useful. Some examples of those types of organisations are: The World Bank; the United Nations; EUROMED; and the European Neighbourhood Policy.
 3. Educational organisations. The findings and materials produced by this Action, especially the Wiki and the exhibition, could not only contribute to many programmes that teach or train students in questions of the social, political and historical aspects of borders, but also assist those concerned with movement, exchange and migration.
 4. Public organisations. Local government organisations located around the eastern peripheries of Europe, as well as art galleries and other exhibition spaces might well be interested in hosting the visual exhibition to be prepared for this Action.

H.2 What?

The main dissemination methods will be as follows:

1. Electronic

- The Wiki. The contents will be available to anyone, but initially, the pages will only be available for editing from the Action team members. So from the beginning of the Action, anyone with access to the Internet will also have access to the work in progress of the Action. This resource will build up pages of information and images on particular issues as they develop from the Working Groups and Workshops. Each Working Group and Workshop will be responsible for designing and updating the pages on their own specific topics. However, given the level of collaborative and cross-over work, any member of the Action can update and edit all of the Wiki pages. Following the end of the Action, anyone registering to be a member of the Wiki will be able to edit and add to the information in it. This small level of protection will prevent large amounts of spamming.
- The Website. There will be two elements to the website. The first will be the public pages freely available on the Internet. These will contain the information about the work of the Action; the public reports of the Action; summaries of the main findings; links to other related organisations and projects, as well as a link to the Wiki; a list of the members of the Action with a short description of their expertise and current research; and an online version of the visual exhibition.

The second element will be a password-protected extranet, in which materials available to members of the Action during the duration of the Action. This will provide an archive of all the photographs taken for the photography project; a full searchable database of the collated information being gathered by the Action; copies of working papers, drafts of reports, publications that have not yet been published; copies of agendas and minutes of meetings; full contact details of all the members; and any other useful information for the organisation and running of the Action. There will be no forum for online real-time discussions on this extranet: past experience indicates it is almost impossible to get sufficient numbers of people together simultaneously to make this effective. Email correspondence, meetings and telephone calls will be used for the dialogue aspects of the Action. After the end of the Action, any sensitive or irrelevant information will be removed from the extranet, and researchers wishing to access it will be able to do so after applying for registration and a password.

2. Meetings and Events

- Conferences: In addition to the Management Committee, Working Group and Workshop meetings, which are intended to intensively disseminate information between members of the Action, there will also be two conferences organized by the Action. These will occur at the end of Year 2, to cover interim results of the Action; and at the end of Year 4, to showcase the final results and provide a deadline for Action members to prepare work for future publication. There will be an open call for both participation in, and attendance at, these conferences. Each Working Group and Workshop will prepare presentations for the conference, with at least 2 and a maximum of four papers to be presented each, depending on progress of results. Submissions of paper proposals from non-Action members to the conferences will be reviewed by the MC or delegated to the Working Groups. The conference proceedings from the first conference will form the basis of individual future publications; some of the proceedings from the second conference will provide the basis of a showcase volume on the results of the Action.
- Visual Exhibition. The results of the photographic project will be compiled into an exhibition, a version of which will also be made available online. This will be the showcase piece to be made available to non-academic organisations and individuals, and it will be designed so as to be accessible to anyone. Arrangements will be made to present the exhibition in several different countries around the north-east and south-east periphery of Europe. The rest of the photographs taken will be stored as a research archive in the extranet part of the Action website. This will be made available to people who apply for membership after the end of the Action.

3. Publications

In addition to the publication of all the collated information on the Wiki, and the reports and working papers on the website, members of the Action will undertake to contribute to a minimum of the following types of publications:

- (a) A showcase volume in which the final results are described. This will include a major introduction about the new approach developed by the Action, and 8 scientific articles, one each from each Working Group and Workshop.

- (b) A second volume in which a range of substantive research results from projects being carried out by members of the Action, will be published. Again, there will be one contribution from each Working Group and each Workshop. It is expected that early career scholars will make a significant contribution to this volume.(c) In addition to these two volumes, members of the Action will be encouraged to publish their results individually or jointly during the course of the Action. It is expected that on average, each member will publish at least one such paper. Senior members of the Action will advise and assist early career researchers in successfully completing this task.

H.3 How?

As described above, the Wiki will begin to disseminate information following the first meeting of Working Groups and will continue to grow as the Action proceeds; the website will similarly develop as the Action continues, building up a knowledge base. For the photography exhibition, the first results will be available to Action members after the first field trip by the photographer has been completed in the first six months of the first year, and that collection will also grow as the Action proceeds. The exhibition will be made available in the final year of the Action. The two conferences will deliver preliminary and final results respectively to largely academic audiences in Year 2 and Year 4. Members of the Action will also be encouraged to attend other specialist conferences to present results to audiences in their specialist disciplinary fields. Finally, it is intended for the results to be built into future collaborative research projects, which will simultaneously extend the dissemination of results and lead to future developments of it.
