

## THE MULTIFACETED ECONOMIC AND POLITICAL GEOGRAPHIES OF INTERNAL AND EXTERNAL EU BORDERS

The 2010 European Conference of the Association for Borderlands Studies  
Department of Spatial Planning and Development, Aristoteleion University of  
Thessaloniki 23-25 September 2010 Veroia – Greece

*Call for papers: 12 March 2010*

### **Conference objective**

The rapidly changing contemporary global political economy as exemplified by the pervasive and interconnected forces of regionalization and globalization, poses particular challenges for border regions. In particular, the changing status and roles of borders severely affect their economic and social functions. Inside the EU, the gradual ‘softening’ of borders leads regions around them in a very peculiar condition: on the one hand, the peripherality in relation to the respective national core is progressively replaced by a new sense of – geographic – centrality, which is very often far from equivalent to functional centrality. On the other hand, border regions need to reinvent themselves: with their role as barriers fading they need to reposition themselves in relation to their national centers, and their newly found – close and distant – neighbors.

Elsewhere in the world, the balance between regionalization and globalization is very different, introducing distinct challenges to the economic functions of borders and their regions. At the same time, all borders are becoming increasingly penetrable to flows of people, goods, ideas and images originating from neighboring as well as distant countries. These flows have a considerable impact on the perception of identity of those living around the borders, as well as on the notion of the ‘other’, having given rise to a considerable array of policy responses.

Although the central theme of the Conference will be the qualitative and quantitative assessment of the economic and political geographies of borders, other papers, dealing with a wide array of aspects related to borders, are also welcome.

## Conference themes

### A. Economic influences of borders

- Convergence/Divergence trends across penetrated borders
- Patterns of trade (e.g. inter / intra industry trade)
- Patterns of Urban System interactions (e.g. agglomeration vs. proximity in border regions)
- Innovation and knowledge based economy across the border (myths and realities)
- Influence of qualitative parameters (e.g. nationality, religion, language etc) in quantitative data (e.g. GDP, trade, FDI etc)
- Political integration vs. economic integration
- Development / underdevelopment around borders
- Impact of relevant EU policies (e.g. Interreg, immigration policies, etc.)

### B. Mobility and borders

- Multifaceted geographies of factor flows and development across borders:
- Increasing mobility of trade and capital
- Labor mobility across the borders (commuting and migration)
- Patterns of Interaction (e.g. tunnel phenomena etc)

### C. Perceptions and Images of / at the border

- Fortification vs. openness
- Exclusive identities vs. multiple belongings
- Clearness vs. vagueness
- Border as filters (skilled vs. unskilled labor force)
- Identity debates (exclusive vs. multiple belongings across the borders; “us” vs. “them”, etc)
- Culture as a place of interaction
- The past and the future as meeting points

### D. Geography matters

- Transformations and typologies of borders and border regions (from virtual to solid and back to virtual borders)
- Patterns of integration (East-West, North-South, Internal-External and beyond)
- The historical and contemporary role of the Mediterranean as a border

## Scientific Board

- *Labrianidis Lois*, Prof. Dept. of Economic Sciences, University of Macedonia; member of the Governing Committee of Dept. Spatial Planning and Development, Aristoteleion University of Thessaloniki - Greece
- *Agelopoulos Giorgos*, Assistant professor Dept. of Balkan Studies, University of Macedonia - Greece
- *Erkut Gulden*, Prof., Head of Regional Planning Section of Department of Urban and Regional Planning, Istanbul Technical University - Turkey
- *Hadjimichalis Costis*, Prof., Dept. of Geography, Harokopeion University- Greece
- *Kafkalas Grigoris*, Prof., Dept. of Architecture, Faculty of Engineering, Aristoteleion University of Thessaloniki; member of the Governing Committee of Dept. Spatial Planning and Development, Aristoteleion University of Thessaloniki – Greece
- *Kalogirou Nikos*, Prof., Dept. of Architecture, Faculty of Engineering, Aristoteleion University of Thessaloniki; President of the Governing Committee of Dept. Spatial Planning and Development, Aristoteleion University of Thessaloniki – Greece
- *Kramsch Olivier Thomas*, Dr., Assistant Professor, Nijmegen Centre for Border Research (NCBR), Department of Human Geography- Netherlands
- *Papataxiarchis Efthymios*, Prof. Dept. of Social Anthropology and History, University of the Aegean - Greece
- *Petrakos Giorgos*, Prof., Dept of Planning and Regional Development, School of Engineering, University of Thessaly- Greece
- *van der Velde Martin*, Co-editor of the Journal of Borderlands Studies, Co-director of the Nijmegen Centre for Border Research, Dept of Human Geography, Nijmegen School of Management, Radboud University Nijmegen, the Netherlands
- *Vujosevic Miodrag*, President of the Scientific Council of the Institute of Architecture and Urban & Spatial Planning of Serbia, Belgrade – Serbia

### **Scientific Organizing Committee**

- *Gritzas Giorgos*, Adjunct Lecturer, Dept. Spatial Planning and Development, Aristoteleion University of Thessaloniki - Greece
- *Kalogerisis Thanasis*, Adjunct Lecturer, Dept. Spatial Planning and Development, Aristoteleion University of Thessaloniki - Greece
- *Kourtesis Artemis*, Adjunct Lecturer, Dept. Spatial Planning and Development, Aristoteleion University of Thessaloniki - Greece

- *Labrianidis Lois*, Prof. Dept. Of Economic Sciences, University of Macedonia, member of the Governing Committee of Dept. Spatial Planning and Development, Aristoteleion University of Thessaloniki - Greece
- *Topaloglou Lefteris*, Adjunct Lecturer, Dept of Planning and Regional Development, School of Engineering, University of Thessaly- Greece

### **Administrative Support**

*Eleni Stoltidou*, Administrative staff, Dept. Spatial Planning and Development, Aristoteleion University of Thessaloniki - Greece

## **Conference organization**

### **Conference roadmap**

**Proposals for papers:** A one page abstract outlining the main aims, as well as the theoretical and methodological underpinnings of the paper should be sent along with a completed application form by **12<sup>th</sup> of March 2010** to [estolid@plandevl.auth.gr](mailto:estolid@plandevl.auth.gr).

**Selection of papers:** Authors will be notified about the outcome of the selection process by **30 April 2010**

**Submission of manuscripts:** Completed manuscripts for inclusion in the conference proceedings (otherwise noncompulsory) should be delivered by the **27<sup>th</sup> of August**. The format of the finished manuscripts should be in compliance with the JBS content and format requirements<sup>1</sup>

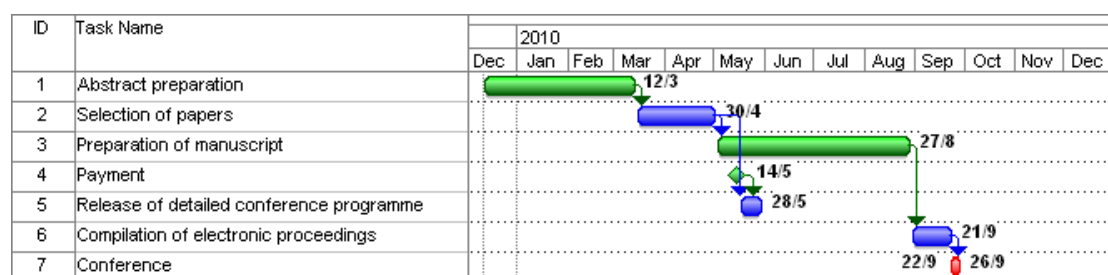


Figure 1. Important dates on the road to the conference

<sup>1</sup> ([http://www.absborderlands.org/jbs/jbs\\_instructions.pdf](http://www.absborderlands.org/jbs/jbs_instructions.pdf))

## **Fees**

### Conference

Conference fee is set at 70€ for professionals and 40€ for students. The conference fee covers all conference materials, coffee break refreshments, the opening reception, and conference dinner.

### Field trip

A tour at the border region between Greece and Bulgaria will be offered on Thursday, 23<sup>rd</sup> September (prior to the beginning of the Conference).

For those wishing to participate in the field trip, cost is estimated at 40€ per person including transport and meals.

*All payment arrangements must have been completed by 15<sup>th</sup> May 2010*

## **Conference outline**

The tentative format of the whole event is the following:

One invited speaker / discussant will open the thematic sessions within each of the above themes. If necessary, groups will hold parallel session during the two days in session.

**Table 1. Tentative program**

Date	Event
Wed 22 Sept	Arrivals of participants to field-trip
Thu 23 Sept morning- afternoon	Field trip to the Greek – Bulgarian border region
Thu 23 Sept evening	Conference reception and key-note speech
Fri 24 Sept	All groups in session
Sat 25 Sept	
Sun 26 Sept	Departures

## **Publications (tentative)**

The conference e-proceedings will comprise all accepted papers and will be hosted by the website of the Department of Spatial Planning and Development, Aristoteleion University of Thessaloniki. About 15 - 20 papers selected by the Conference's Scientific Committee will be included in the Conference's printed proceedings. Finally, papers from the Conference will be published in a special issue of the JBS.

## **Further Details**

To obtain the required application form as well as more information please contact Eleni Stoltidou ([estoltid@plandevel.auth.gr](mailto:estoltid@plandevel.auth.gr)), or visit <http://www.plandevel.auth.gr/>.